

CAPTO



REGO-FIX®

Made in
Switzerland



Swiss
Precision
Tools



REGO-FIX CAPTO Toolholders

As a Certified Sandvik CAPTO manufacturer, REGO-FIX uses new state of the art measuring and grinding systems to create the most accurate CAPTO holders that can be produced. REGO-FIX CAPTO is available in the most extensive ER holder line offered as well as in our powRgrip® collet system. REGO-FIX has the CAPTO collet holder for your applications.

REGO-FIX® Q+® System CAPTO toolholders are balanced by design to G 2.5 @ 25,000 rpms. Type H toolholders are ready to accept Hi-Q® balancing rings which allow precision balancing of the system up to 80,000 rpms depending on the balancing rings used.

Why REGO-FIX CAPTO:

- Sandvik Certified Manufacturer
- State of the art grinding and measuring systems
- Total manufacturer of the holder and collet system. This guarantees the best possible TIR and clamping force.
- Largest selection of ER tool holders available.
- Available in ER and powRgrip® holder systems.

Features & Benefits

Swiss Quality

Made in Switzerland to ISO 9001/ISO 14001.

Marking

Type and part number (reduces selection errors).

Traceability

Lot numbers are marked on all products for traceability throughout the entire manufacturing process.

Original REGO-FIX®

Original only with the REGO-FIX® quality symbol \triangle . Guarantees the best quality.

T.I.R. of the Whole System <0.0001" (3 μ m)

Highest clamping force and lowest runout. (powRgrip®)

Surface Finish max. Ra 0.25

Higher clamping force and higher transferable torque.

Q+® Balancing

100% balanced to G 2.5 @ 25,000 rpm.

Ideal for High Speed Cutting (HSC) and High Performance Cutting (HPC).

Hi-Q® Balancing System

Ready to accept Hi-Q® balancing rings which will allow for the offset of the imbalance introduced by the cutting tool up to 80,000 rpm.

Minimal Outside Dimensions

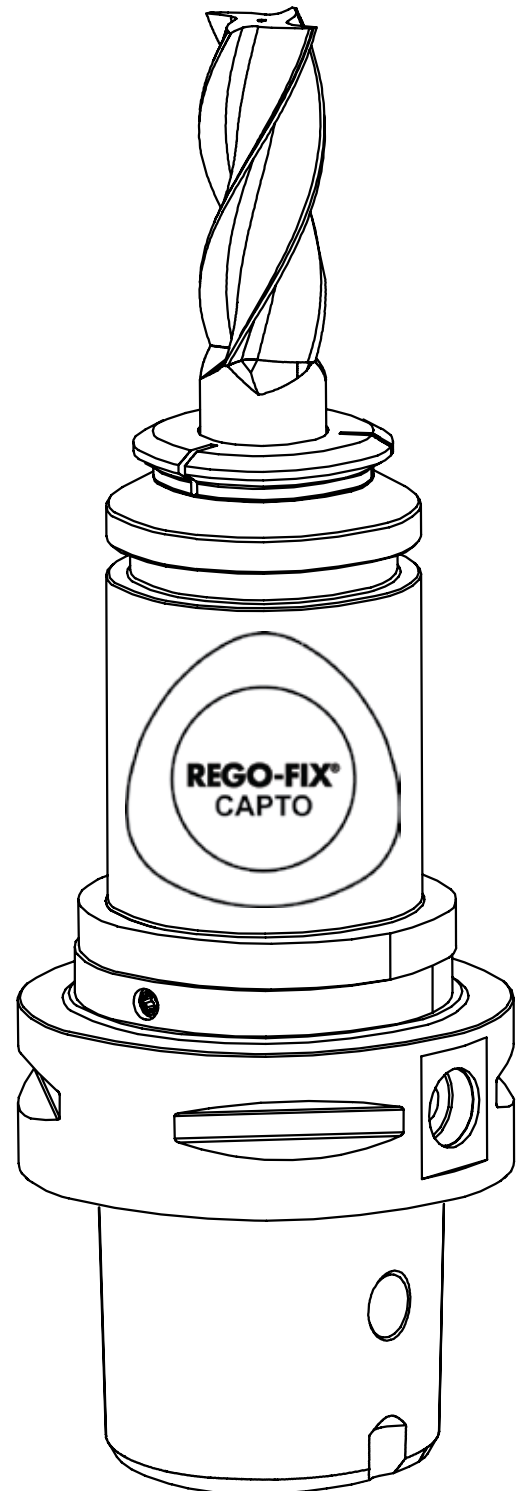
Slim design provides more processing flexibility.

Excellent at Small Diameters

Clamping of small diameter tools from \varnothing 0.2 mm and higher.

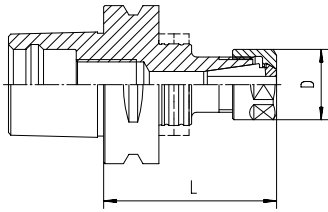
ID Chip Hole

Per DIN 69873 with 10 mm diameter.



ER

CAPTO ER Toolholders



Type	Part No.	D [mm]	L [mm]	Balancing Rings	Wrenches
C3 / ER 16 x 045	2803.11610*	28	45		7112.16010
C3 / ER 20 x 045	2803.12010*	34	45		7112.20010
C4 / ER 16 x 070	2804.11630*	28	70		7112.16010
C4 / ER 20 x 052	2804.12010*	34	52		7112.20010
C4 / ER 25 x 052	2804.12510*	42	52		7111.25000
C4 / ER 32 x 054	2804.13210*	50	54		7111.32000
C5 / ER 16 x 070 H	4805.11630	28	70	FWR 285	7112.16010
C5 / ER 16 x 100 H	4805.11650	28	100	FWR 285	7112.16010
C5 / ER 20 x 055	2805.12010*	34	55		7112.20010
C5 / ER 20 x 100 H	4805.12050	34	100	FWR 325	7112.20010
C5 / ER 25 x 055	2805.12510*	42	55		7111.25000
C5 / ER 25 x 100 H	4805.12550	42	100	FWR 325	7111.25000
C5 / ER 32 x 057	2805.13210*	50	57		7111.32000
C5 / ER 32 x 070 H	4805.13230	50	70	FWR 405	7111.32000
C5 / ER 32 x 100 H	4805.13250	50	100	FWR 405	7111.32000
C6 / ER 11 x 150 H	4806.11170	19	150	FWR 325	7112.11010
C6 / ER 16 x 070 H	4806.11630	28	70	FWR 325	7112.16010
C6 / ER 16 x 100 H	4806.11650	28	100	FWR 325	7112.16010
C6 / ER 16 x 150 H	4806.11670	28	150	FWR 325	7112.16010
C6 / ER 20 x 060	2806.12020*	34	60	FWR 325	7112.20010
C6 / ER 25 x 060	2806.12520*	42	60		7112.20010
C6 / ER 25 x 100 H	4806.12550	42	100	FWR 325	7111.25000
C6 / ER 25 x 130 H	4806.12560	42	130	FWR 325	7111.25000
C6 / ER 32 x 060	2806.13220*	50	60		7111.32000
C6 / ER 32 x 070 H	4806.13230	50	70	FWR 405	7111.32000
C6 / ER 32 x 100 H	4806.13250	50	100	FWR 405	7111.32000
C6 / ER 40 x 065	2806.14020*	63	65		7111.40000
C8 / ER 25 x 070	2808.12530*	42	70		7111.25000
C8 / ER 32 x 070	2808.13230*	50	70		7111.32000
C8 / ER 40 x 070	2808.14030*	63	70		7111.40000
C8 / ER 50 x 080	2808.15040*	78	80		7111.50000

Supplied with: clamping nut
 *Not for use with Balancing Rings

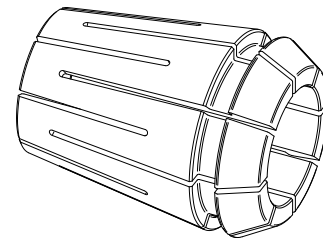
ER Collets (11, 16 & 20)

Metric Collets

Clamping Capacity		ER 11	ER 16	ER 20
[mm]	[Inch]	Part No.	Part No.	Part No.
1.00 – 0.50	0.0394 – 0.0197	1111.01000	1116.01000	1120.01000
1.50 – 1.00	0.0591 – 0.0394	1111.01500	1116.01500	1120.01500
2.00 – 1.00	0.0787 – 0.0394	1111.02000	1116.02000	1120.02000
2.50 – 1.50	0.0984 – 0.0591	1111.02500	1116.02500	1120.02500
3.00 – 2.00	0.1181 – 0.0787	1111.03000	1116.03000	1120.03000
3.50 – 2.50	0.1378 – 0.0984	1111.03500	1116.03500	1120.03500
4.00 – 3.00	0.1575 – 0.1181	1111.04000	1116.04000	1120.04000
4.50 – 3.50	0.1772 – 0.1378	1111.04500	1116.04500	1120.04500
5.00 – 4.00	0.1969 – 0.1575	1111.05000	1116.05000	1120.05000
5.50 – 4.50	0.2165 – 0.1772	1111.05500	1116.05500	1120.05500
6.00 – 5.00	0.2362 – 0.1969	1111.06000	1116.06000	1120.06000
6.50 – 5.50	0.2559 – 0.2165	1111.06500	1116.06500	1120.06500
7.00 – 6.00	0.2756 – 0.2362	1111.07000	1116.07000	1120.07000
7.50 – 6.50	0.2953 – 0.2559		1116.07500	1120.07500
8.00 – 7.00	0.3150 – 0.2756		1116.08000	1120.08000
8.50 – 7.50	0.3347 – 0.2953		1116.08500	1120.08500
9.00 – 8.00	0.3543 – 0.3150		1116.09000	1120.09000
9.50 – 8.50	0.3740 – 0.3347		1116.09500	1120.09500
10.00 – 9.00	0.3937 – 0.3543		1116.10000	1120.10000
10.50 – 9.50	0.4134 – 0.3740			1120.10500
11.00 – 10.00	0.4330 – 0.3937			1120.11000
11.50 – 10.50	0.4528 – 0.4134			1120.11500
12.00 – 11.00	0.4724 – 0.4330			1120.12000
12.50 – 11.50	0.4921 – 0.4528			1120.12500
13.00 – 12.00	0.5118 – 0.4724			1120.13000

Inch Collets

Ø [Inch]	Clamping Capacity [inch]	ER 11 Part No.	ER 16 Part No.	ER 20 Part No.
1/16	0.0625 – 0.0425	1111.01592	1116.01592	
3/32	0.0938 – 0.0738	1111.02382	1116.02382	
1/8	0.1250 – 0.0850	1111.03182	1116.03182	1120.03182
5/32	0.1563 – 0.1163	1111.03972	1116.03972	
3/16	0.1875 – 0.1475	1111.04762	1116.04762	1120.04762
7/32	0.2188 – 0.1788	1111.05562	1116.05562	
1/4	0.2500 – 0.2100	1111.06352	1116.06352	1120.06352
9/32	0.2813 – 0.2413		1116.07142	
5/16	0.3125 – 0.2725		1116.07942	1120.07942
11/32	0.3438 – 0.3038		1116.08732	
3/8	0.3750 – 0.3350		1116.09532	1120.09532
13/32	0.4063 – 0.3663		1116.10322	
7/16	0.4375 – 0.3975			1120.11113
1/2	0.5000 – 0.4600			1120.12703



For drawings with detailed dimensions see:

search.rego-fix.com



REGO-FIX.COM

ER Ultra Precision and Tap collets are available.
See REGO-FIX.COM for a complete listing.

1-800-999-7346

ER Collets (25, 32, 40 & 50)

Metric Collets

Clamping Capacity		ER 25	ER 32	ER 40	ER 50
[mm]	[Inch]	Part No.	Part No.	Part No.	Part No.
1.00 – 0.50	0.0394 – 0.0197	1125.01000			
1.50 – 1.00	0.0591 – 0.0394	1125.01500			
2.00 – 1.00	0.0787 – 0.0394	1125.02000	1132.02000		
2.50 – 1.50	0.0984 – 0.0591	1125.02500	1132.02500		
3.00 – 2.00	0.1181 – 0.0787	1125.03000	1132.03000	1140.03000	
3.50 – 2.50	0.1378 – 0.0984	1125.03500	1132.03500	1140.03500	
4.00 – 3.00	0.1575 – 0.1181	1125.04000	1132.04000	1140.04000	
4.50 – 3.50	0.1772 – 0.1378	1125.04500	1132.04500	1140.04500	
5.00 – 4.00	0.1969 – 0.1575	1125.05000	1132.05000	1140.05000	
5.50 – 4.50	0.2165 – 0.1772	1125.05500	1132.05500	1140.05500	
6.00 – 5.00	0.2362 – 0.1969	1125.06000	1132.06000	1140.06000	1150.06000
6.50 – 5.50	0.2559 – 0.2165	1125.06500	1132.06500	1140.06500	
7.00 – 6.00	0.2756 – 0.2362	1125.07000	1132.07000	1140.07000	
7.50 – 6.50	0.2953 – 0.2559	1125.07500	1132.07500	1140.07500	
8.00 – 7.00	0.3150 – 0.2756	1125.08000	1132.08000	1140.08000	1150.08000
8.50 – 7.50	0.3347 – 0.2953	1125.08500	1132.08500	1140.08500	
9.00 – 8.00	0.3543 – 0.3150	1125.09000	1132.09000	1140.09000	
9.50 – 8.50	0.3740 – 0.3347	1125.09500	1132.09500	1140.09500	
10.00 – 9.00	0.3937 – 0.3543	1125.10000	1132.10000	1140.10000	1150.10000
10.50 – 9.50	0.4134 – 0.3740	1125.10500	1132.10500	1140.10500	
11.00 – 10.00	0.4330 – 0.3937	1125.11000	1132.11000	1140.11000	
11.50 – 10.50	0.4528 – 0.4134	1125.11500	1132.11500	1140.11500	
12.00 – 11.00	0.4724 – 0.4330	1125.12000	1132.12000	1140.12000	1150.12000
12.50 – 11.50	0.4921 – 0.4528	1125.12500	1132.12500	1140.12500	
13.00 – 12.00	0.5118 – 0.4724	1125.13000	1132.13000	1140.13000	
13.50 – 12.50	0.5315 – 0.4921	1125.13500	1132.13500	1140.13500	
14.00 – 13.00	0.5512 – 0.5118	1125.14000	1132.14000	1140.14000	1150.14000
14.50 – 13.50	0.5709 – 0.5315	1125.14500	1132.14500	1140.14500	
15.00 – 14.00	0.5905 – 0.5512	1125.15000	1132.15000	1140.15000	
15.50 – 14.50	0.6102 – 0.5709	1125.15500	1132.15500	1140.15500	
16.00 – 15.00	0.6300 – 0.5905	1125.16000	1132.16000	1140.16000	1150.16000
16.50 – 15.50	0.6496 – 0.6102		1132.16500	1140.16500	
17.00 – 16.00	0.6693 – 0.6300		1132.17000	1140.17000	
17.50 – 16.50	0.6890 – 0.6496		1132.17500	1140.17500	
18.00 – 17.00	0.7087 – 0.6693		1132.18000	1140.18000	1150.18000
18.50 – 17.50	0.7284 – 0.6890		1132.18500	1140.18500	

Metric Collets (Continued)

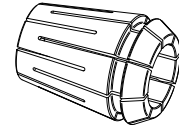
Clamping Capacity		ER 32	ER 40	ER 50
[mm]	[Inch]	Part No.	Part No.	Part No.
19.00 – 18.00	0.7480 – 0.7078	1132.19000	1140.19000	
19.50 – 18.50	0.7677 – 0.7284	1132.19500	1140.19500	
20.00 – 19.00	0.7874 – 0.7480	1132.20000	1140.20000	1150.20000
20.50 – 19.50	0.8071 – 0.7677		1140.20500	
21.00 – 20.00	0.8268 – 0.7874		1140.21000	
21.50 – 20.50	0.8465 – 0.8071		1140.21500	
22.00 – 21.00	0.8661 – 0.8268		1140.22000	1150.22000
22.50 – 21.50	0.8858 – 0.8465		1140.22500	
23.00 – 22.00	0.9055 – 0.8661		1140.23000	
23.50 – 22.50	0.9252 – 0.8858		1140.23500	
24.00 – 23.00	0.9449 – 0.9055		1140.24000	1150.24000
24.50 – 23.50	0.9646 – 0.9252		1140.24500	
25.00 – 24.00	0.9843 – 0.9449		1140.25000	
25.50 – 24.50	1.0039 – 0.9646		1140.25500	
26.00 – 25.00	1.0236 – 0.9843		1140.26000	1150.26000
27.00 – 26.00	1.0630 – 1.0236		1140.27000	
28.00 – 27.00	1.1024 – 1.0630		1140.28000	1150.28000
29.00 – 28.00	1.1417 – 1.1024		1140.29000	
30.00 – 29.00	1.1811 – 1.1417		1140.30000	1150.30000
32.00 – 30.00				1150.32000
34.00 – 32.00				1150.34000

For drawings with detailed dimensions see:
search.rego-fix.com

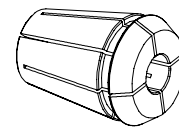
ER Collets (25, 32, 40 & 50)

Inch Collets

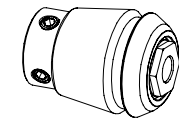
Ø [Inch]	Clamping Capacity		ER 25 Part No.	ER 32 Part No.	ER 40 Part No.
	[inch]	[mm]			
1/8	0.1250 – 0.0850	3.18 – 2.18	1125.03182	1132.03182	1140.03182
3/16	0.1875 – 0.1475	4.76 – 3.76	1125.04762	1132.04762	1140.04762
1/4	0.2500 – 0.2100	6.35 – 5.35	1125.06352	1132.06352	1140.06352
5/16	0.3125 – 0.2725	7.94 – 6.94	1125.07942	1132.07942	1140.07942
3/8	0.3750 – 0.3350	9.53 – 8.53	1125.09532	1132.09532	1140.09532
7/16	0.4375 – 0.3975	11.11 – 10.11	1125.11112	1132.11112	1140.11112
1/2	0.5000 – 0.4600	12.70 – 11.70	1125.12702	1132.12702	1140.12702
9/16	0.5625 – 0.5225	14.29 – 13.29	1125.14292	1132.14292	1140.14292
5/8	0.6250 – 0.5850	15.88 – 14.88	1125.15882	1132.15882	1140.15882
11/16	0.6875 – 0.6475	17.46 – 16.46		1132.17462	1140.17462
3/4	0.7500 – 0.7100	19.05 – 18.05		1132.19052	1140.19052
13/16	0.8125 – 0.7725	20.64 – 19.64		1132.20642	1140.20642
7/8	0.8750 – 0.8350	22.23 – 21.23			1140.22232
1	1.0000 – 0.9600	25.40 – 24.40			1140.25402



ER-Ultra Precision collets also available. See catalog for listing

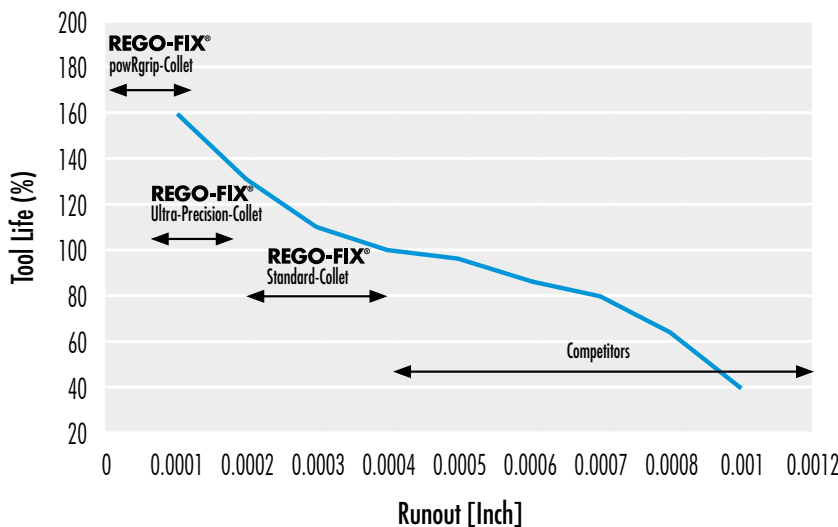


ER-GB Rigid Tap collets also available. See catalog for listing



ET-1 Compensating Tap collets also available. See catalog for listing

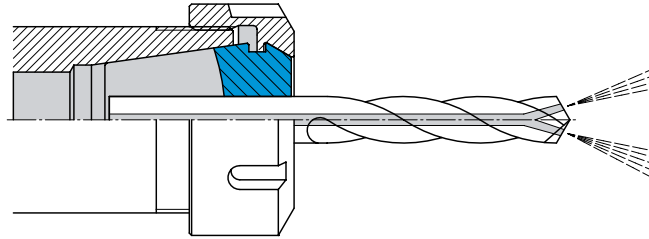
Influence of Tool Run-out (T.I.R.) on Tool Life



Precision is a function of the whole system including toolholder, collet and clamping nut. For best results, we recommend that you use REGO-FIX® toolholders, REGO-FIX® collets and REGO-FIX® clamping nuts.

Metallic Sealed ER Collets (DM/ER)

For Coolant Through Applications



Metric Collets DM/ER 16

Clamping Capacity		ER 16 DM Part No.
[mm]	[Inch]	
3.00	0.1181	1216.0.3000
4.00	0.1575	1216.04000
5.00 – 4.50	0.1969 – 0.1772	1216.05000
6.00 – 5.50	0.2362 – 0.2165	1216.06000
7.00 – 6.50	0.2756 – 0.2559	1216.07000
8.00 – 7.50	0.3150 – 0.2953	1216.08000
9.00 – 8.50	0.3543 – 0.3347	1216.09000
10.00 – 9.50	0.3937 – 0.3740	1216.10000
ER 16 Metric Metallic Sealed Collet Set		1216.00000

Inch Collets DM/ER 16

Ø [Inch]	Clamping Capacity		ER 16 DM Part No.
	[Inch]	[mm]	
1/8	0.1250	3.18	1216.03182
3/16	0.1875	4.76	1216.04762
1/4	0.2500 – 0.2303	6.35 – 5.85	1216.06352
5/16	0.3125 – 0.2929	7.94 – 7.44	1216.07942
3/8	0.3750 – 0.3556	9.53 – 9.03	1216.09532
ER 16 Inch Metallic Sealed Collet Set			1216.00002

Metric Collets DM/ER 20

Clamping Capacity		ER 20 DM Part No.
[mm]	[Inch]	
3.00	0.1181	1220.0.3000
4.00	0.1575	1220.04000
5.00	0.1969	1220.05000
6.00	0.2362	1220.06000
7.00 – 6.50	0.2756 – 0.2559	1220.07000
8.00 – 7.50	0.3150 – 0.2953	1220.08000
9.00 – 8.50	0.3543 – 0.3347	1220.09000
10.00 – 9.50	0.3937 – 0.3740	1220.10000
11.00 – 10.50	0.4330 – 0.4134	1220.11000
12.00 – 11.50	0.4724 – 0.4528	1220.12000
13.00 – 12.50	0.5118 – 0.4921	1220.13000
ER 20 Metric Metallic Sealed Collet Set		1220.00000

Inch Collets DM/ER 20

Ø [Inch]	Clamping Capacity		ER 20 DM Part No.
	[Inch]	[mm]	
1/8	0.1250	3.18	1220.03182
3/16	0.1875	4.76	1220.04762
1/4	0.2500	6.35	1220.06352
5/16	0.3125 – 0.2929	7.94 – 7.44	1220.07942
3/8	0.3750 – 0.3556	9.53 – 9.03	1220.09532
7/16	0.4375 – 0.4177	11.11 – 10.61	1220.11112
1/2	0.5000 – 0.4803	12.70 – 12.20	1220.12702
ER 20 Inch Metallic Sealed Collet Set			1220.00002

All DM/ER collets have a TIR of 0.0002"

Metric Collets DM/ER 25

Clamping Capacity		ER 25 DM Part No.
[mm]	[Inch]	
6.00	0.2362	1225.06000
8.00 – 7.50	0.3150 – 0.2953	1225.08000
10.00 – 9.50	0.3937 – 0.3740	1225.10000
12.00 – 11.50	0.4724 – 0.4528	1225.12000
14.00 – 13.50	0.5512 – 0.5315	1225.14000
16.00 – 15.50	0.6300 – 0.6102	1225.16000
ER 25 Metric Metallic Sealed Collet Set		1225.00000

Inch Collets DM/ER 25

Ø [Inch]	Clamping Capacity		ER 25 DM Part No.
	[Inch]	[mm]	
1/4	0.2500	6.35	1225.06352
5/16	0.3125 – 0.2929	7.94 – 7.44	1225.07942
3/8	0.3750 – 0.3556	9.53 – 9.03	1225.09532
7/16	0.4375 – 0.4177	11.11 – 10.61	1225.11112
1/2	0.5000 – 0.4803	12.70 – 12.20	1225.12702
9/16	0.5625 – 0.5425	14.29 – 13.79	1225.14292
5/8	0.6250 – 0.6055	15.88 – 15.38	1225.15882
ER 25 Inch Metallic Sealed Collet Set			1225.00002

Metric Collets DM/ER 32

Clamping Capacity		ER 32 DM Part No.
[mm]	[Inch]	
6.00	0.2362	1232.06000
8.00 – 7.50	0.3150 – 0.2953	1232.08000
10.00 – 9.50	0.3937 – 0.3740	1232.10000
12.00 – 11.50	0.4724 – 0.4528	1232.12000
14.00 – 13.50	0.5512 – 0.5315	1232.14000
16.00 – 15.50	0.6300 – 0.6102	1232.16000
18.00 – 17.50	0.7087 – 0.6890	1232.18000
20.00 – 19.50	0.7874 – 0.7677	1232.20000
ER 32 Metric Metallic Sealed Collet Set		1232.00000

Inch Collets DM/ER 32

Ø [Inch]	Clamping Capacity		ER 32 DM Part No.
	[Inch]	[mm]	
1/4	0.2500	6.35	1232.06352
5/16	0.3125 – 0.2929	7.94 – 7.44	1232.07942
3/8	0.3750 – 0.3556	9.53 – 9.03	1232.09532
7/16	0.4375 – 0.4177	11.11 – 10.61	1232.11112
1/2	0.5000 – 0.4803	12.70 – 12.20	1232.12702
9/16	0.5625 – 0.5425	14.29 – 13.79	1232.14292
5/8	0.6250 – 0.6055	15.88 – 15.38	1232.15882
11/16	0.6875 – 0.6677	17.46 – 16.96	1232.17462
3/4	0.7500 – 0.7303	19.05 – 18.55	1232.19052
ER 32 Inch Metallic Sealed Collet Set			1232.00002

Metric Collets DM/ER 40

Clamping Capacity		ER 40 DM Part No.
[mm]	[Inch]	
6.00	0.2362	1240.06000
8.00	0.3150	1240.08000
10.00 – 9.50	0.3937 – 0.3740	1240.10000
12.00 – 11.50	0.4724 – 0.4528	1240.12000
14.00 – 13.50	0.5512 – 0.5315	1240.14000
16.00 – 15.50	0.6300 – 0.6102	1240.16000
18.00 – 17.50	0.7087 – 0.6890	1240.18000
20.00 – 19.50	0.7874 – 0.7677	1240.20000
22.00 – 21.50	0.8661 – 0.8465	1240.22000
24.00 – 23.50	0.9449 – 0.9252	1240.24000
25.00 – 24.50	0.9843 – 0.9646	1240.25000
26.00 – 25.50	1.0236 – 1.0039	1240.26000
ER 40 Metric Metallic Sealed Collet Set		1240.00000

Inch Collets DM/ER 40

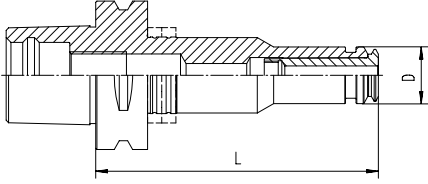
Ø [Inch]	Clamping Capacity		ER 40 DM Part No.
	[Inch]	[mm]	
3/8	0.3750 – 0.3556	9.53 – 9.03	1240.09532
7/16	0.4375 – 0.4177	11.11 – 10.61	1240.11112
1/2	0.5000 – 0.4803	12.70 – 12.20	1240.12702
9/16	0.5625 – 0.5425	14.29 – 13.79	1240.14292
5/8	0.6250 – 0.6055	15.88 – 15.38	1240.15882
11/16	0.6875 – 0.6677	17.46 – 16.96	1240.17462
3/4	0.7500 – 0.7303	19.05 – 18.55	1240.19052
13/16	0.8125 – 0.7929	20.64 – 20.14	1240.20642
7/8	0.8750 – 0.8555	22.23 – 21.73	1240.22232
1	1.0000 – 0.9803	25.40 – 24.90	1240.25402
ER 40 Inch Metallic Sealed Collet Set			1240.00002

All DM/ER collets have a TIR of 0.0002"

Select availability, please call for stock status

PG

CAPTO powRgrip® Toolholders



Type	Part No.	D [mm]	L [mm]	Balancing Rings
C3 / PG 10 x 055*	2803.71010	16	55	—
C3 / PG 15 x 067*	2803.71520	24	67	—
C4 / PG 10 x 060*	2804.71020	16	60	—
C4 / PG 10 x 080 H	4804.71040	16	80	FWR 225
C4 / PG 15 x 062*	2804.71520	24	62	—
C4 / PG 15 x 080 H	4804.71540	24	80	FWR 285
C5 / PG 10 x 060*	2805.71020	16	60	—
C5 / PG 10 x 080 H	4805.71040	16	80	FWR 285
C5 / PG 10 x 120 H	4805.71060	16	120	FWR 285
C5 / PG 15 x 065*	2805.71520	24	65	—
C5 / PG 15 x 080 H	4805.71540	24	80	FWR 285
C5 / PG 15 x 120 H	4805.71560	24	120	FWR 325
C5 / PG 25 x 080*	2805.72540	40	80	—
C5 / PG 25 x 100 H	4805.72550	40	100	FWR 405
C6 / PG 10 x 080 H	4806.71040	16	80	FWR 325
C6 / PG 10 x 120 H	4806.71060	16	120	FWR 325
C6 / PG 10 x 160 H	4806.71080	16	160	FWR 325
C6 / PG 15 x 080 H	4806.71540	24	80	FWR 325
C6 / PG 15 x 120 H	4806.71560	24	120	FWR 325
C6 / PG 15 x 160 H	4806.71580	24	160	FWR 325
C6 / PG 25 x 085*	2806.72540	40	85	—
C6 / PG 25 x 100 H	4806.72550	40	100	FWR 405
C6 / PG 25 x 120 H	4806.72560	40	120	FWR 405
C6 / PG 25 x 160 H	4806.72580	40	160	FWR 405
C6 / PG 32 x 090*	2806.73240	50	90	—
C8 / PG 25 x 092*	2808.72540	40	92	—
C8 / PG 32 x 090*	2808.73240	50	90	—

*Not for use with balancing rings.

For drawings with detailed dimensions see:

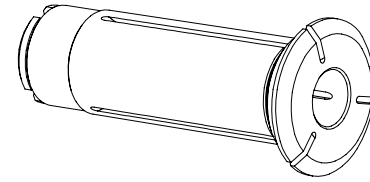
search.rego-fix.com

REGO-FIX.COM

1-800-999-7346

powRgrip® Collets

powRgrip® PG 10 Collets



Dia. (mm)	Dia. (inch)	PG 10 Part No.	PG 10CF Part No.
2.000		1710.02000	
2.500		1710.02500	
3.000		1710.03000	1710.03002
3.500		1710.03500	--
3.175	1/8"	1710.03181	1710.03183
4.000		1710.04000	1710.04002
4.500		1710.04500	--
4.763	3/16"	1710.04761	1710.04763
5.000		1710.05000	1710.05002
5.500		1710.05500	--
6.000		1710.06000	1710.06002
6.350	1/4"	1710.06351	1710.06353

powRgrip® PG 15 Collets

Dia. (mm)	Dia. (inch)	PG 15 Part No.	PG 15CF Part No.
3.000		1715.03000	1715.03002
3.175	1/8"	1715.03181	1715.03183
3.500		1715.03500	--
4.000		1715.04000	1715.04002
4.500		1715.04500	--
4.763	3/16"	1715.04761	1715.04763
5.000		1715.05000	1715.05002
5.500		1715.05500	--
6.000		1715.06000	1715.06002
6.350	1/4"	1715.06351	1715.06353
7.000		1715.07000	1715.07002
7.938	5/16"	1715.07941	1715.07943
8.000		1715.08000	1715.08002
9.000		1715.09000	1715.09002
9.525	3/8"	1715.09521	1715.09523
10.000		1715.10000	1715.10002

powRgrip® PG 25 & PG 32 Collets

Dia. (mm)	Dia. (inch)	PG 25 Part No.	PG 25CF Part No.	PG 32 Part No.	PG 32CF Part No.
3.000		1725.03000	1725.03002		
3.175	1/8"	1725.03181	1725.03183		
3.500		1725.03500	--		
4.000		1725.04000	1725.04002		
4.500		1725.04500	--		
4.763	3/16"	1725.04761	1725.04763		
5.000		1725.05000	1725.05002		
5.500		1725.05500	--		
6.000		1725.06000	1725.06002	1732.06000	1732.06002
6.350	1/4"	1725.06351	1725.06353	1732.06351	1732.06353
7.000		1725.07000	1725.07002	1732.07000	1732.07002
7.938	5/16"	1725.07941	1725.07943	1732.07941	1732.07943
8.000		1725.08000	1725.08002	1732.08000	1732.08002
9.000		1725.09000	1725.09002	1732.09000	1732.09002
9.525	3/8"	1725.09521	1725.09523	1732.09521	1732.09523
10.000		1725.10000	1725.10002	1732.10000	1732.10002
11.000		1725.11000	1725.11002	1732.11000	1732.11002
11.113	7/16"	1725.11111	1725.11113	1732.11111	1732.11113
12.000		1725.12000	1725.12002	1732.12000	1732.12002
12.700	1/2"	1725.12701	1725.12703	1732.12701	1732.12703
14.000		1725.14000	1725.14002	1732.14000	1732.14002
14.288	9/16"	1725.14291	1725.14293	1732.14291	1732.14293
15.875	5/8"	1725.15881	1725.15883	1732.15881	1732.15883
16.000		1725.16000	1725.16002	1732.16000	1732.16002
17.463	11/16"	1175.17461			
18.000		1725.18000	1725.18002	1732.18000	1732.18002
19.050	3/4"	1725.19051	1725.19053	1732.19051	1732.19053
20.000		1725.20000	1725.20002	1732.20000	1732.20002
22.000				1732.22000	1732.22002
22.225	7/8"			1732.22231	1732.22233
25.000				1732.25000	1732.25002
25.400	1			1732.25401	1732.25403

PG Collets do not have a clamping range.
Nominal diameter only. Requires h6 tolerance shanks

powRgrip® Microbore Collets

Dia (mm)	Dia (inch)	PG 10 Part No.
0.200		1710.00209
0.300		1710.00309
0.400		1710.00409
0.500		1710.00509
0.600		1710.00609
0.700		1710.00709

Dia (mm)	Dia (inch)	PG 10 Part No.
0.800		1710.00809
0.900		1710.00909
1.000		1710.01009
1.500		1710.01509
1.588	1/16"	1710.01589

Automatic Machine

Type	Part No.	Description
PGU 9000 A (PG10-PG32)	7610.90100	110 V machine
APG 910	7611.10900	PG 10 clamping insert
APG 915	7611.15900	PG 15 clamping insert
APG 925	7611.25900	PG 25 clamping insert
APG 932	7611.32900	PG 32 clamping insert

PGU 9000 automatic clamping unit with push-button operation and auto clamping insert recognition. Designed to make operation easy, fast and reliable. Easy interchangeable inserts and safety interlocks make the machine safe for all operators.



Compact Machine



Type	Part No.	Description	Measurement W x D x H	Incl. Taper Cleaner
PGC 2510	7621.25109	powRgrip® Compact hydraulic clamping unit	450 x 492 x 280	
APC 25	7622.25000	Insert for PGC 2510 for PG 25 toolholders		■
APC 15	7622.15000	Insert for PGC 2510 for PG 15 toolholders		■
APC 10	7622.10000	Insert for PGC 2510 for PG 10 toolholders		■

PGC hand pumps offer a price advantage over the PGU units while still performing the task of pressing in tools. The operator actuates the pressure by use of the lever arm until the desired pressure is reached.

